

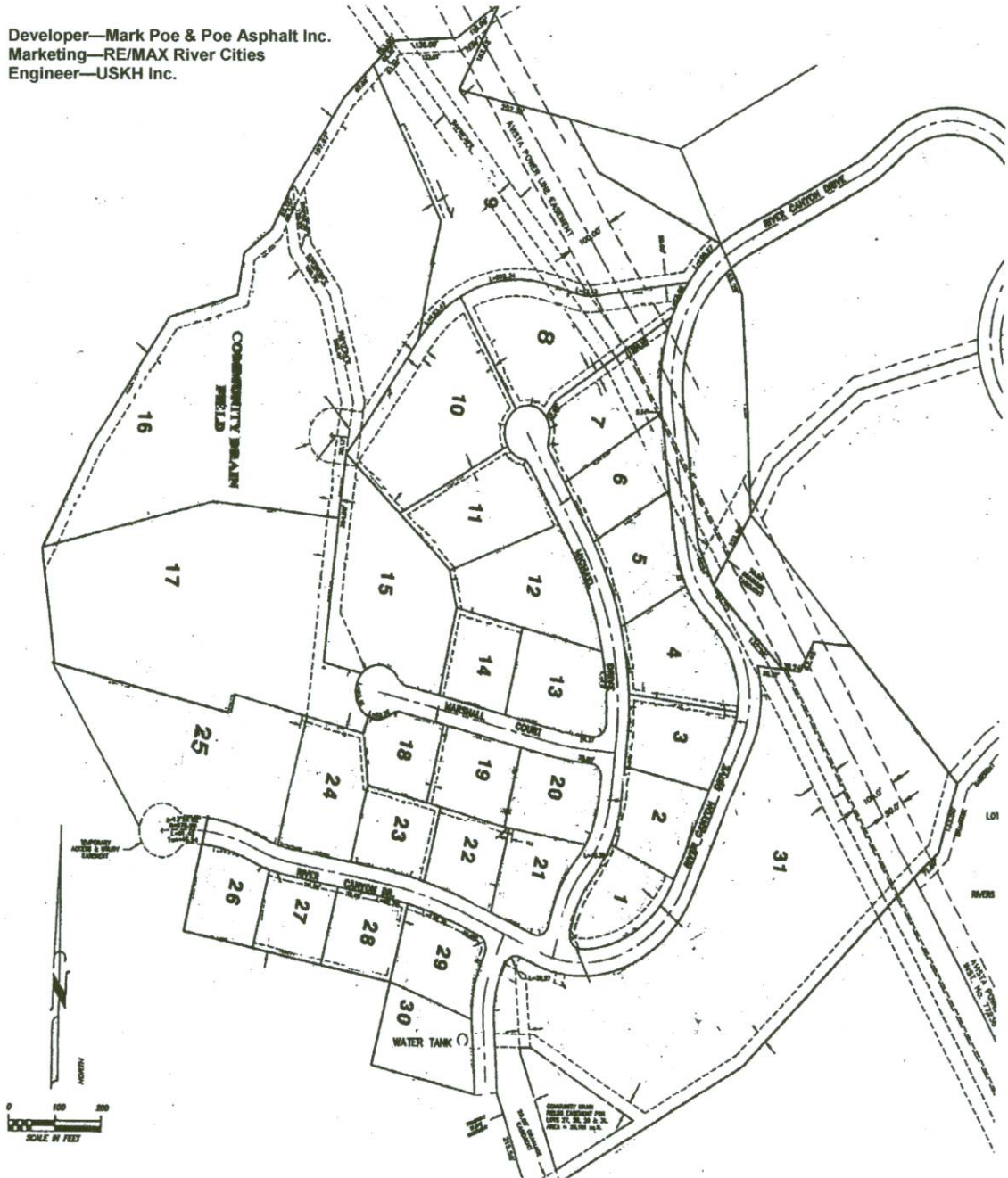


River Cities

SUNRISE AT RIVER'S BEND SUBDIVISION

7/6/2012

Developer—Mark Poe & Poe Asphalt Inc.
Marketing—RE/MAX River Cities
Engineer—USKH Inc.



1015 F Street
Lewiston, ID 83501
RiverCitiesHomes@Cableone.net

Office: (208) 743-6575
Fax: (208) 746-3992
www.HomesAtRiverCities.com