

FOR LEASE

OFFICE SPACE

ADDRESS – 903 D Street, Suite 1, Lewiston, Idaho

DESCRIPTION – Main floor office space in a two story building at 903 D Street at the corner of 9th and D Streets in Lewiston, Idaho

SIZE – Approximately 900 square feet

MONTHLY RENT – \$500 per month - \$6.67 per square foot per year

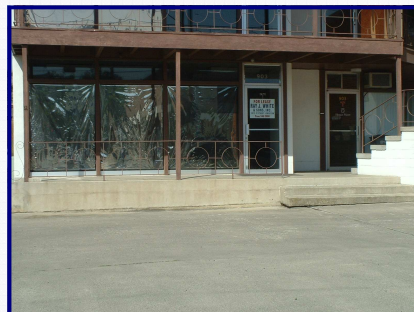
PARKING – Adequate parking is available to the property.

UTILITIES – Water, sewer and garbage by Landlord – Gas, electric and telephone by Tenant

BEST USES – Prior uses for this space have been as general office space.

ZONING – The zoning for this property is downtown commercial.

GENERAL DESCRIPTION – This office space is in a very visible location at the corner of 9th and D Streets in Lewiston, Idaho. The space was most recently used for general office space. The space has one large reception/office area, a single separate office, bathroom and an administrative area. Adjacent properties are for retail and office uses. Other tenants in the building include an appraisal office and other general offices.



For more information or an appointment to see the space contact Dick White at RE/MAX River Cities (208) 743-6575 or dwhite@lewiston.com or come to our office at 1015 F Street in downtown Lewiston, Idaho

www.HomesAtRiverCities.com